

**THE FEMALE OF CYRTOLOBUS MAXINEI DENNIS  
(HOMOPTERA, MEMBRACIDAE)<sup>1</sup>**

Clifford J. Dennis<sup>2</sup>

In my (1970) paper I described the male of this species. I now wish to describe what I believe to be the female. I have been unable to capture a mating pair, but I was able to find on the same plants at the same time more males of *C. maxinei* and these females which fit no other description. There were other *Cyrtolobus* present, but they were of well-defined species which can not be confused with *C. maxinei*.

The insect described here keys readily to the genus *Cyrtolobus* in Funkhouser's (1923) Hemiptera of Connecticut. On page 171 it comes out to the subfamily Smiliinae. On page 172 of his key to genera of Smiliinae it comes out in the second part of couplet 18 to *Cyrtolobus*. In my (1952) keys on pages 130 and 131 it runs easily to subfamily Smiliinae, tribe Smiliini, genus *Cyrtolobus*. However, it will not fit in my key to species of *Cyrtolobus*. The simplest way to modify my key to females would be to change couplets 2 and 3 on pages 131 and 132 to read as follows:

- |   |                         |
|---|-------------------------|
| 2. Smaller (5.3-5.8 mm) (II, 16)  | <i>inermis</i> (Emmons) |
| Larger (6.4-7.4 mm) .....   | 3                       |
| 3. Pronotum concolorous green (II, 17) .....  | <i>querci</i> (Fitch)   |
| Pronotum yellow-green with dorsal carina broadly creamy white with<br>central interrupted black line in posterior 2/3 ..... | <i>helena</i> Woodruff  |
| Pronotum yellow-green, lacking broad median creamy stripe.  | <i>maxinei</i> Dennis   |

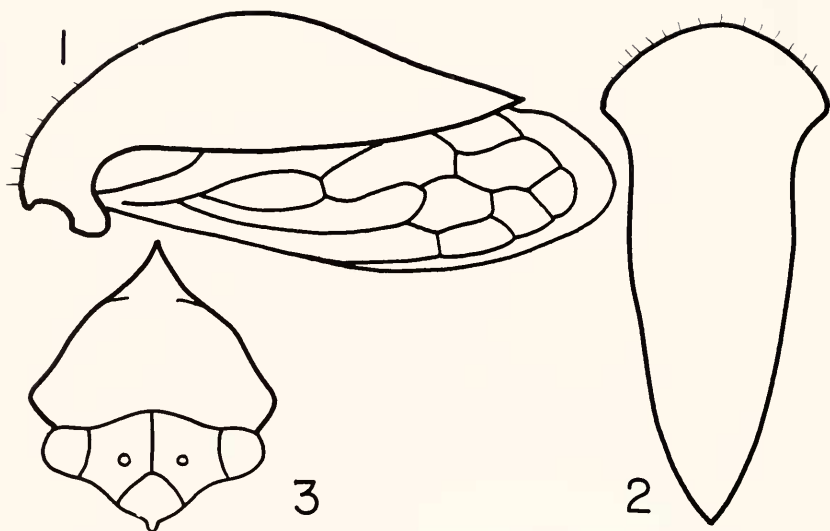
***Cyrtolobus maxinei* Dennis FEMALE ALLOTYPE**

(FIGURES 1, 2, 3)

FEMALE: Medium sized, relatively low, in form resembling *C. inermis* (Em-

<sup>1</sup>Accepted for publication: August 2, 1971 [3.0128].

<sup>2</sup>Wisconsin State University, Whitewater, WI 53190.



FIGURES 1-3. *Cyrtolobus maxinei* female allotype. Fig. 1, left lateral view of pronotum and tegmen; Fig. 2, dorsal view of pronotum; Fig. 3, anterior view of face and pronotum. All drawn to same scale.

mons), *C. querci* (Fitch) and *C. helena* Woodruff. Yellow-green. Principally differs from *C. inermis* by being larger; from *C. querci* by being more yellowish and by having pronotal elevation more posterior; from *C. helena* by being smaller and lacking the broad median stripe with interrupted black line in posterior 2/3.

Face between eyes nearly twice as broad as tall, coarsely punctate, yellow-green. Ocelli hyaline, equidistant from each other and eye. Eye creamy with red mottling. Clypeus abruptly narrowed apically, yellow-green. Lateral and ventral aspects of head yellow-green. Beak pale testaceous. Base of antenna yellow-green, style testaceous. Yellow-green of head parts shares the more yellowish cast of the metopidium.

Pronotum yellow-green, coarsely punctate, scantily haired, slightly elevated in the middle, regularly curved to the sub-acute apex which attains half of the terminal areole. Metopidium with a more yellowish cast, callosities not evident.

Body beneath pale testaceous. Pre-elytral hook pale blue-green. Abdomen yellow-green with posterior edges of segments pale yellow. Sternite VII and Valvula I pale testaceous. Valvula 2 dark brown. Valvula 3 testaceous basally, yellow-green distally.

Legs testaceous.

Tegmina hyaline; base and veins pale yellow; basal part of larger veins pale blue green.

*Allotype dimensions*: Total length 6.4 mm. Maximum width of pronotum 2.6 mm.

Allotype female: 14 miles west of Drummond, Bayfield Co., Wisconsin, July 24, 1971 (Clifford J. Dennis).

*Paratype females*: Six specimens: same locality, date and collector. One specimen: same locality and collector, August 20, 1967. Two of the paratypes show a more yellowish pronotum with a hint of large mottled areas of pale yellow-green.

## LITERATURE CITED

- DENNIS, CLIFFORD J. 1952. The Membracidae of Wisconsin. Trans. Wisconsin Acad. Sci., 41:130-132.
- . 1970. A new treehopper of the genus *Cyrtolobus* from Wisconsin (Homoptera, Membracidae). Ent. News, 81:191-194.
- FUNKHOUSER, W. D. 1923. Family Membracidae in Britton's *Guide to the insects of Connecticut*. Part IV. The Hemiptera or sucking insects of Connecticut. Bull. Connecticut Geol. Nat. Hist. Surv., 34: 171-172.

**2.0128. The female of *Cyrtolobus maxinei* Dennis (Homoptera, Membracidae).**

ABSTRACT—The female of *Cyrtolobus maxinei* Dennis (Homoptera, Membracidae). The female is medium sized, relatively low in form resembling *C. inermis* (Emmons), *C. querci* (Fitch) and *C. helena* Woodruff but differs from these in size, form and color. Collected in the type locality 14 miles west of Drummond, Bayfield Co., Wisconsin.—CLIFFORD J. DENNIS, Wisconsin State University, White-water, WI 53190.

*Descriptors*: Homoptera; Membracidae; *Cyrtolobus maxinei* female; *Cyrtolobus inermis*, in key; *Cyrtolobus querci*, in key; *Cyrtolobus helena*, in key.